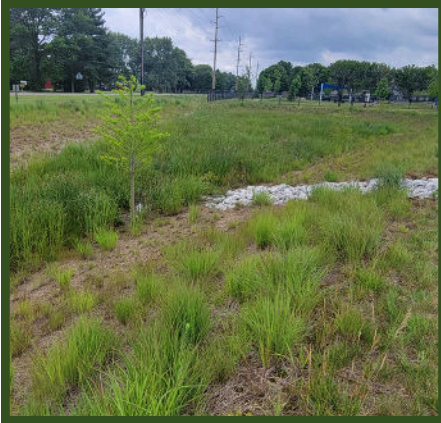


CARDINAL PARK ENHANCEMENT PROJECTS

Total Project Delivery: Installation & Preservation

OWNER: Town of Brownsburg
CLIENT: Town of Brownsburg
LOCATION: Brownsburg, Indiana
YEAR: 2017 - 2024



Cardinal Park is a unique and highly connected greenspace in Brownsburg, Indiana. It features a diverse range of amenities and ecosystems, making it an important recreational and environmental asset for the community. The park is bordered by a church to the south, a neighborhood to the west, and a school to the north, providing accessibility and value to multiple user groups. A key component of the park is its direct connection to the B&O Trail, the largest trail system in Brownsburg, enhancing pedestrian and cyclist mobility throughout the area. Williams Creek Management has been involved in various enhancement projects within the park since 2017.

Sustainability and stormwater management were major components of the Cardinal Park Enhancement projects. The site includes seven detention basins, each serving as a self-contained ecosystem. These basins not only manage water on-site but also contribute to local biodiversity with varying levels of vegetation, including trees, shrubs, and wild plantings. The water remains treated onsite, reducing runoff impact on surrounding areas.

Since its initial design phase in 2017, the project has continued to evolve. The Williams Creek Team has been involved from the very beginning and remains engaged in ongoing maintenance, including seeding, planting, and landscape upkeep. An additional enhancement to the park includes a custom-designed entryway sign and landscaped feature on the east side of the project.

With a combination of ecological responsibility, community connectivity, and recreational offerings, the Cardinal Park Enhancement Projects stand as a testament to thoughtful urban greenspace development.

Market Served: Government (Parks & Recreation)